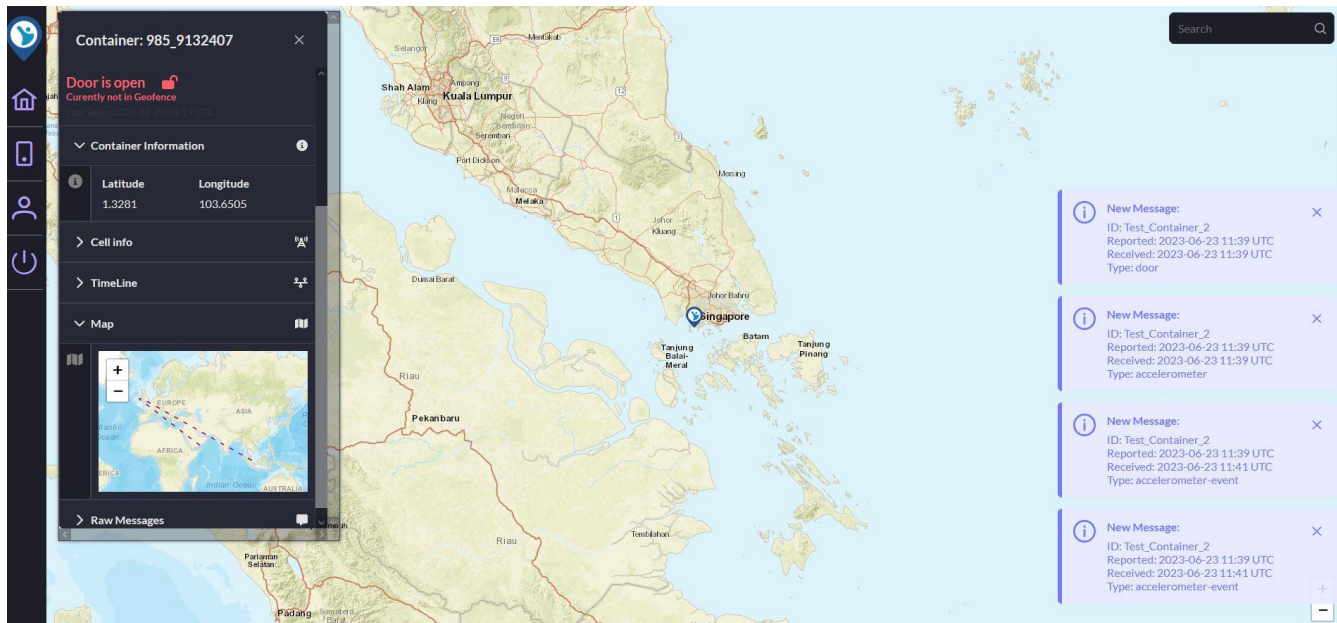


Simplify, optimise, reduce your carbon footprint, and gain unparalleled visibility across the supply chain with IoT PASS™

Unlike other solutions which rely on interrogating multiple parts of the supply chain, reverse logistics of devices and battery changes / recharges, IoT PASS™ consolidates everything through a single, durable device, fitted directly against your shipping container door. IoT PASS™ gives you a single source of real-time data - for the container lifespan.



IoT PASS™ has a measurable impact on the end-to-end journey; operational efficiency, carbon footprint, customs & excise, border security, human trafficking and insurance risks. IoT PASS™ tracks the container providing a single unified data set that is consistent and reliable across the global supply chain.

IoT PASS™ will disrupt the disparate set of incumbent supply chain solutions and better meet the digital transformation demands of the supply chain, namely; cloud, blockchain, big data, analytics and machine learning. Working closely with global shipping companies, ports, and traditional edge device manufacturers we offer a real, tailored solution for a complex business environment.

### What IoT PASS™ does that is truly unique

**AI Driven analysis & insights:** IoT PASS™ is aware of the container's environment at all times (context aware) through unique data gathering and Machine Learning - providing ground-breaking data output.

**Carbon Footprint diagnostics:** The unique AI output allows us to gather carbon footprint data across all modes of transport – companies will get an accurate picture of the environmental impact of any container journey

**Battery life of the device:** The AI output provides critical input to our Power Management & Energy Harvesting capabilities – extending battery life up to the lifespan of the container itself.

**Connectivity:** IoT PASS™ is a global low connectivity cost IoT device which uses the latest IoT connectivity e.g. 4G/5G NB IoT.

**Business Model:** It is envisaged that the world's biggest shippers will request for the containers that move their goods to be IoT PASS™ enabled, thus providing visibility, integrity, security, and a carbon footprint counter, under a SaaS model (or whatever model meets your requirements).

### The Team – 30 Years Breaking the Status Quo in Global Connectivity

Incorporated in June 2015, Net Feasa is led by a team of senior professionals with a deep understanding of the wireless and satellite industries. We have designed, developed, deployed, and managed terrestrial and vertical wireless telecommunications networks in over 30 countries, on 800 aircraft, on 500 container ships and across more than 1,000 remote territories. We also advise some of the world's foremost corporations on next generation IoT connectivity. Our extensive experience enables us to add real client centred value to every project.

